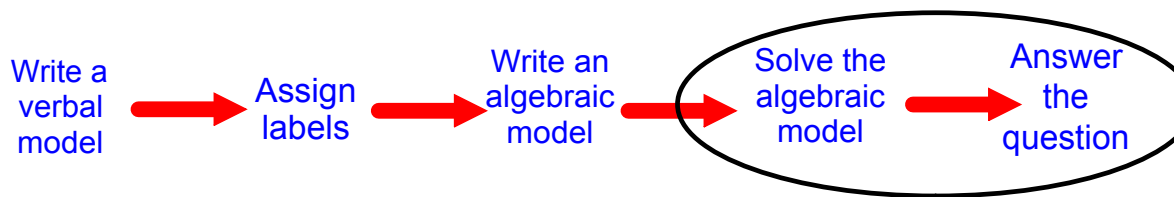


Problem Solving Using Algebraic Models

VOCABULARY

A **verbal model** is an expression that uses words to represent a real-life situation. *Words*

The verbal model is then used to write a mathematical statement, called an **algebraic model**. *#'s, variables, symbols*



Two airports, one in California and one in New York, are 3000 miles apart. A plane leaving California is traveling to New York at 200 miles per hour. Another plane leaving New York is traveling to California at 250 miles per hour. When will the two planes pass each other?

SOLUTION



d = r · t

Algebraic

3000 = 250t + 200t

Solve

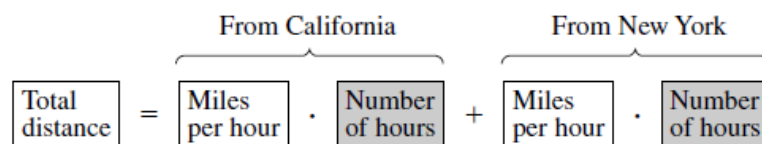
3000 = 450t

$\frac{3000}{450} = t$

Answer

t = 6.6 hr

Verbal Model



Labels

3000mi = 200(t) + (250)(t)

Assignment

p. 37 # 8-14 all

p. 59 # 13-28 all (Quiz Review)

Quiz 1.3-1.5 ~~TOMORROW~~
FRI